



Bioenergy Value chain analysis

Household survey

Tandai, Tanzania



Leibniz Centre for Agricultural Landscape Research e.V.



Environmental Economics and World Trade



The International Food Policy Research Institute



World Agroforestry Centre



Association for Strengthening Agricultural Research in Africa

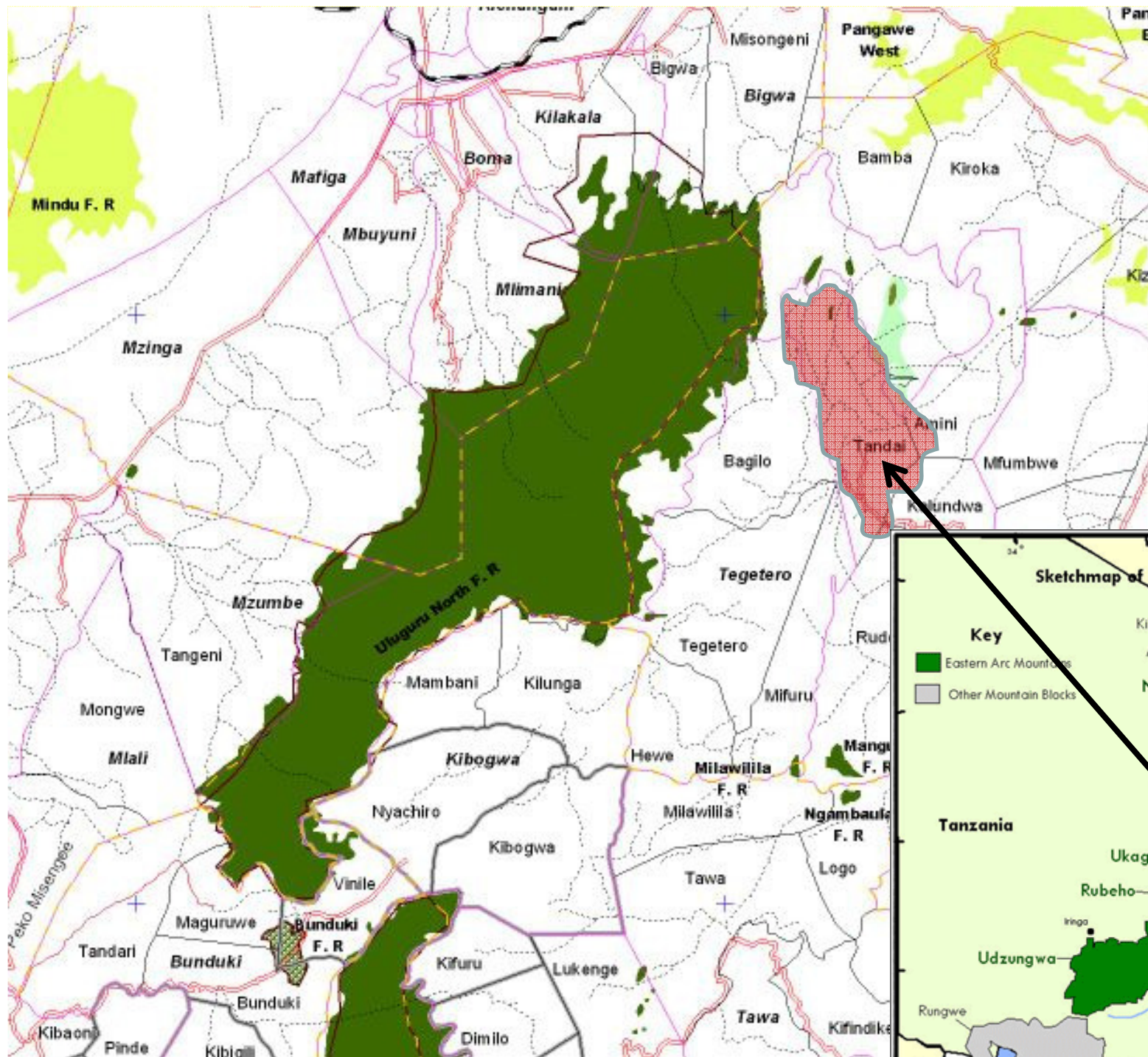


Sokoine University of Agriculture (SUA)



Wuppertal Institute for Climate, Environment and Energy

Müncheberg, 20. August 2010



Survey Area:
Tandai Village
(Kinole Ward,
Morogoro
District)



Survey Area: Tandai Village

- Location within the
 - Uluguru Nature Forest Reserve (UNR)
 - Community forest
- Tandai:
 - 7 Subvillages
 - 1040 households including 4211 individuals
- Sampling: Sample size 30% (stratified random sampling): 314 households
- Wood value chain (firewood, charcoal, timber..)
- Jatropha as a host plant for spices e.g. black pepper, vanilla, also passion fruit.



Vanilla on Jatropha

09. June 2010, ICRAF Nairobi



Black Pepper on Mkangazi



Black Pepper on Jatropha

09. June 2010, ICRAF Nairobi

What has been done so far:

Household survey from 1. March – 5. June 2010

- 314 households with focus on agricultural production patterns (input-output relations) and economic linkages between households
- Value chains of cash crops (banana, pineapple, spices) and agroforestry
- The role of tree-production in the farms (esp. Jatropha)
- Energy consumption and production (Charcoal, firewood, crop residuals, kerosene...)
- Environmental indicators for irrigation, soil, forest
- Perception of and yield losses due to soil erosion
- Time preferences of the farmer
- GPS coordinates including altitude of 80% of the households

Bioenergy value chain analysis

- Assessing direct and indirect multiplier effects of bioenergy production on representative farms (Anja Faße, IUW)
- Sustainability analysis of bioenergy value chains (Harry Hoffmann, ZALF)
- Certification and its potential impact on the bioenergy value chain (Anna Segerstedt, IUW)



Thank for your attention!



Leibniz Centre for Agricultural Landscape Research e.V.



Environmental Economics and World Trade



The International Food Policy Research Institute



World Agroforestry Centre



Association for Strengthening Agricultural Research in Africa



Sokoine University of Agriculture (SUA)



Wuppertal Institute for Climate, Environment and Energy

Müncheberg, 20. August 2010